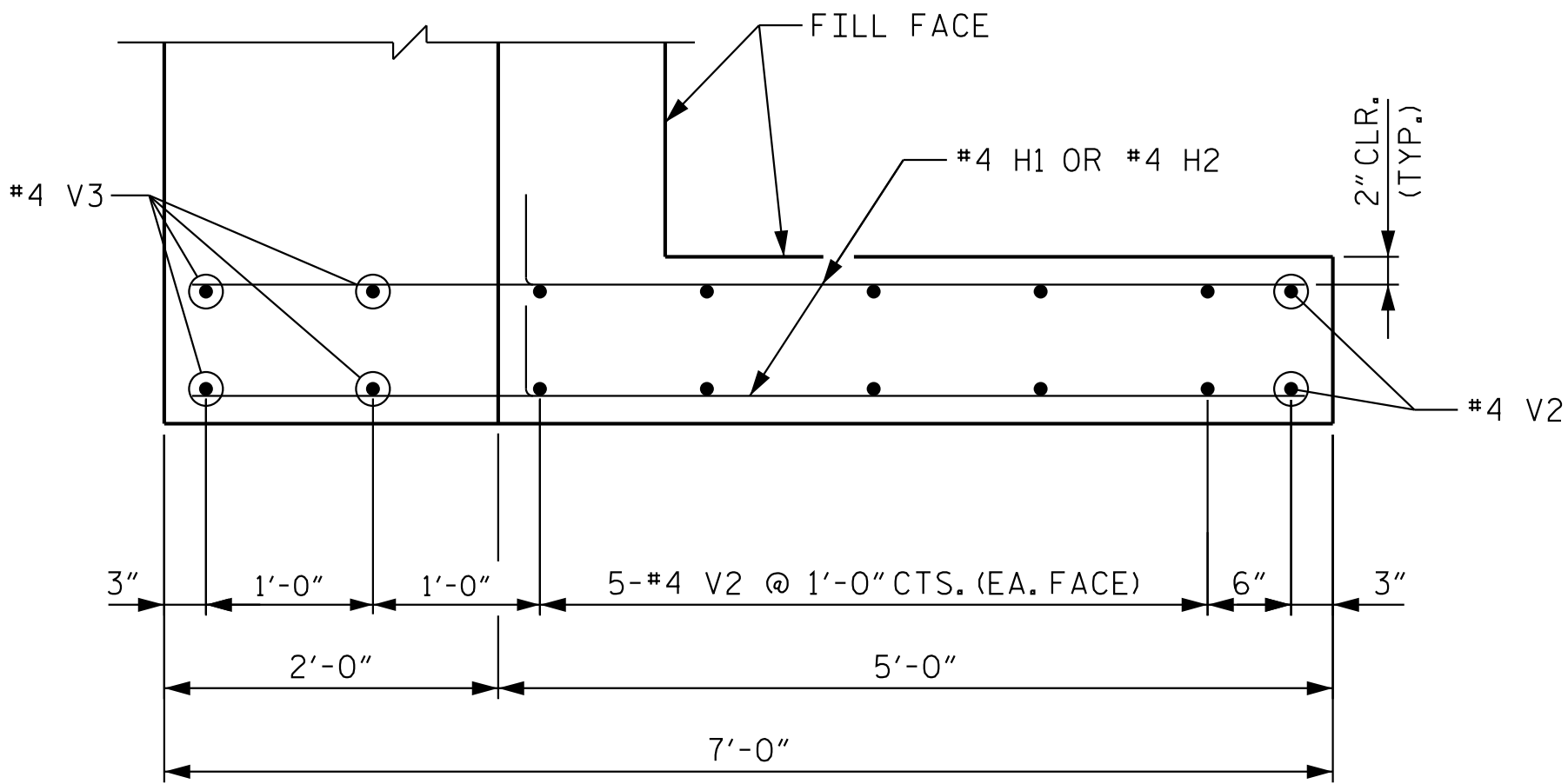
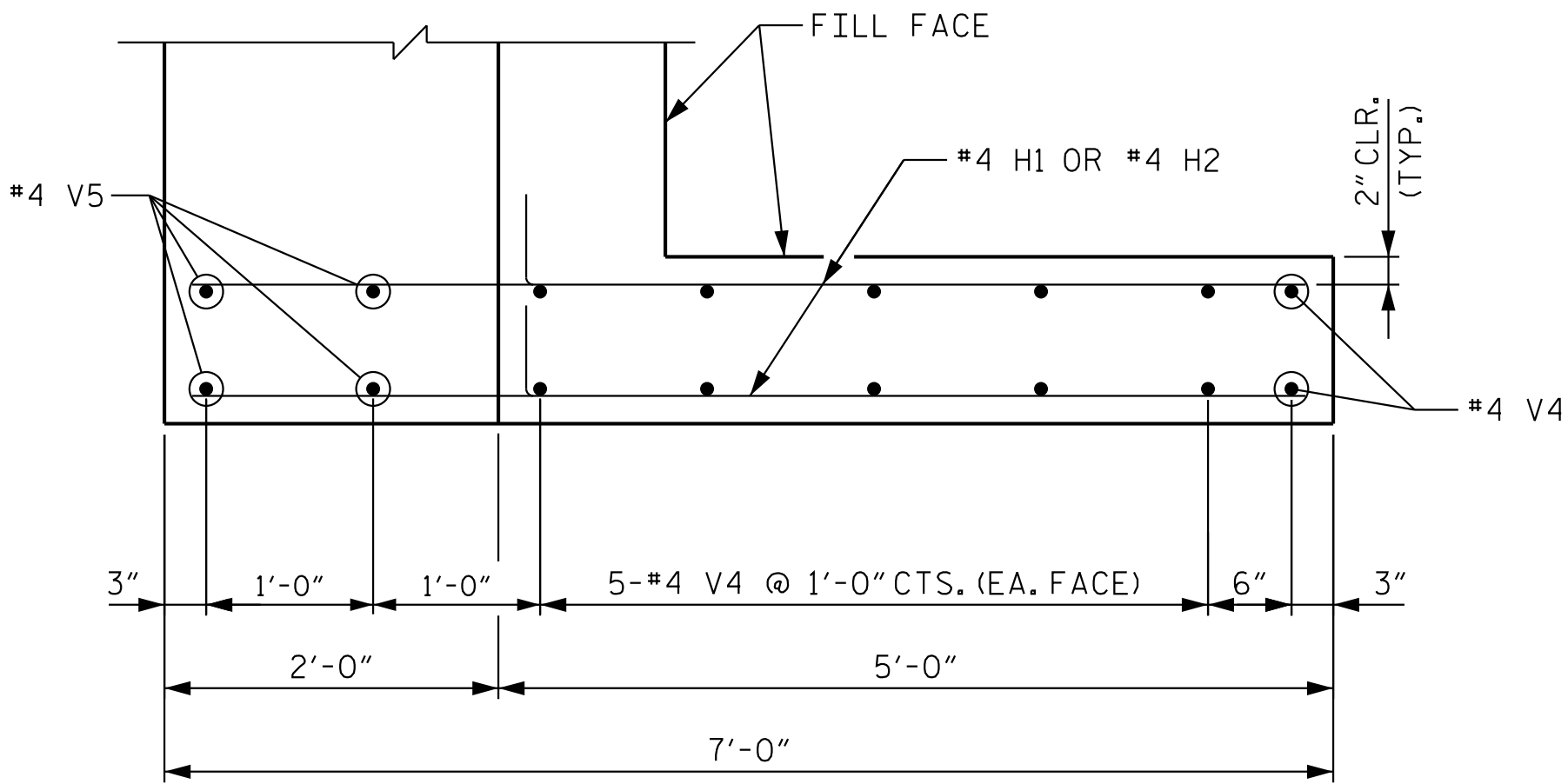


NOTES

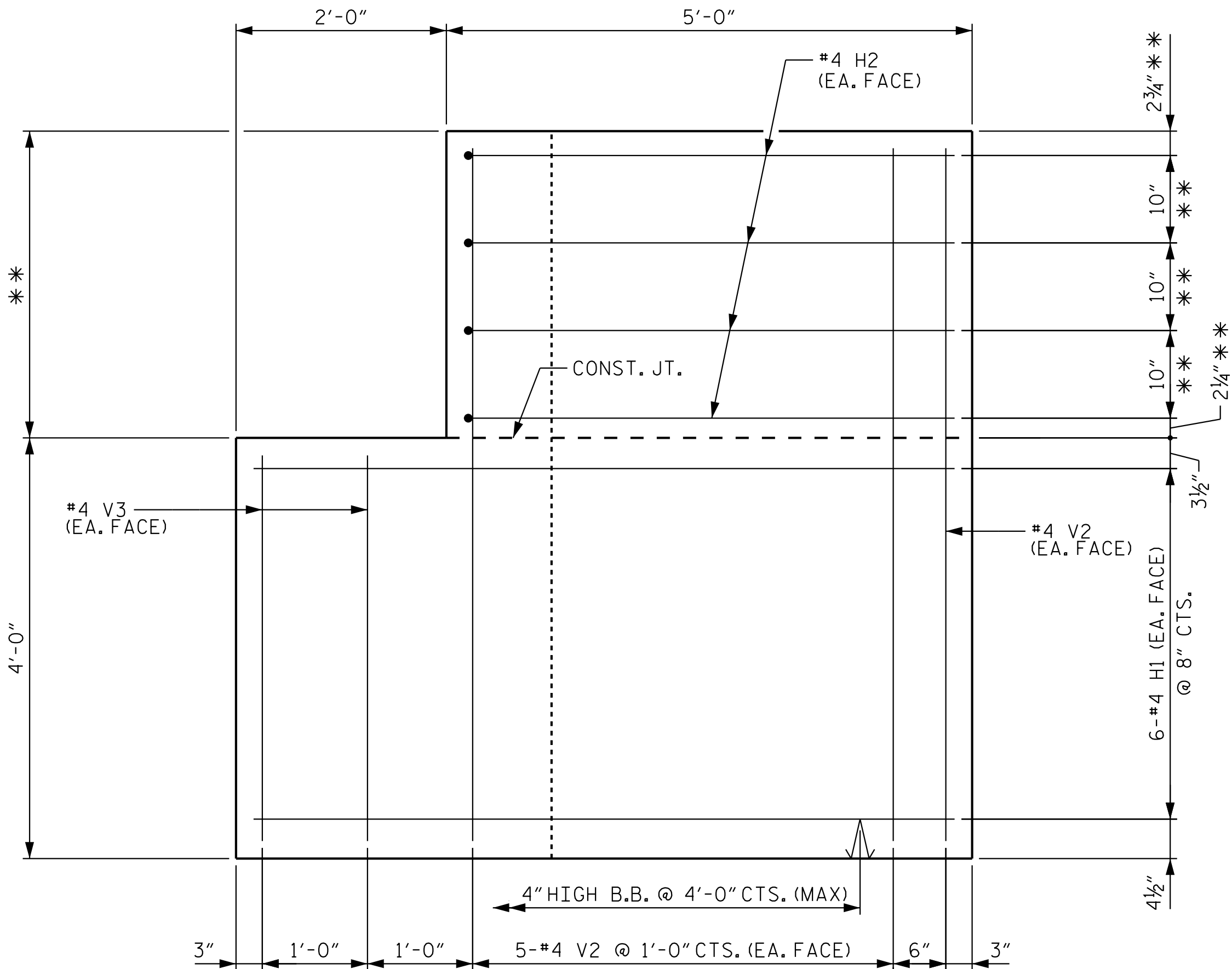
** REFER TO PREFABRICATED PEDESTRIAN BRIDGE (BY OTHERS) FOR ANCHOR BOLT PLACEMENT AND DETAILS, AND FOR DIMENSIONS NOT SHOWN OR REQUIRING VERIFICATION BY THE PREFABRICATED BRIDGE ENGINEER.



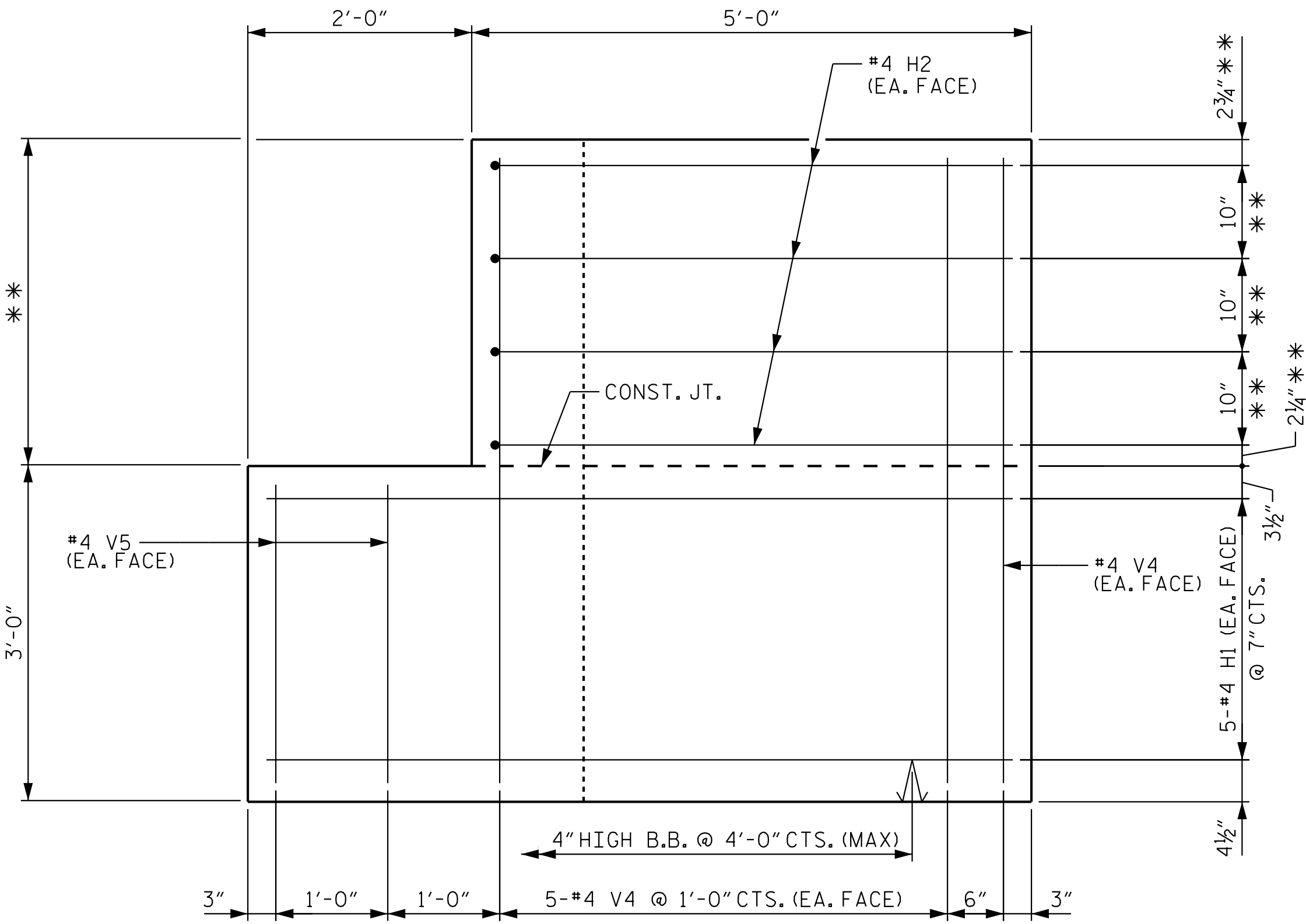
BRIDGE END BENT WING PLAN - STRUCTURE #1



BRIDGE END BENT WING PLAN - STRUCTURE #2



BRIDGE END BENT WING ELEVATION - STRUCTURE #1



BRIDGE END BENT WING ELEVATION - STRUCTURE #2

DOCUMENT NOT CONSIDERED FINAL
UNLESS ALL SIGNATURES COMPLETED

PREPARED IN THE OFFICE OF:

Kimley»Horn

NC LICENSE #F-0102
200 S TRYON ST., SUITE 200
CHARLOTTE, NORTH CAROLINA 28202
PHONE: (919) 677-2000

© 2025

BRIDGE END BENT
DETAILS



PROJECT:

CLEAR CREEK GREENWAY

JOB NUMBER:

015574013

SHEET NUMBER:

S-11

K:\RDT_Structures\Bridge\NC\015574013 - BL-0008 Clear Creek\CapDgn\01_BL0008_SMU_EB3.dgn

9/30/2025

REV. No.:	REVISION:	DATE:	DRAWN BY:	CHECKED BY:
This document, together with the concepts and designs presented herein, as an instrument of service, is intended only for the specific purpose and client for which it was prepared. Reuse of and improper reliance on this document without written authorization and adoption by Kimley-Horn and Associates, Inc. shall be without liability to Kimley-Horn and Associates, Inc. Copyright Kimley-Horn and Associates, Inc., 2024				